



**CHELSEA  
CASTLE**

**150 W 22<sup>ND</sup> STREET**  
BETWEEN 6<sup>TH</sup> & 7<sup>TH</sup> AVENUE



**REDWOOD**  
PROPERTY GROUP

# GROUND FLOOR+LOWER LEVEL



## Ground Floor Space

5,000 SF | 15'7" Ceilings

## Lower Level

3,500 SF | 9'7" Ceilings

## Combined as Office

11,250 Total RSF

- Suitable for Retail, Office & Showroom
- New Sidewalk Elevator
- New Fully Automatic Service Elevator
- Brand New Glass Storefront & high end glass installation inside
- Potential for flagpole signage
- Energy efficient AC system in place in ground and lower level
- Lower level utilized as workspace with wet pantry, restrooms, two means of egress and elevator access
- 800 amps/3 phase power
- 5 Bathrooms

NEARBY  
TRAINS



## CONTACT EXCLUSIVE BROKERS:

Jay D. Fuller | M. Rapaport Co., Inc. | P: 917.939.7992 | [jd@rapaport.com](mailto:jd@rapaport.com)

[www.150w22.com](http://www.150w22.com)

Eli Someck | Redwood Property Group | P: 646.214.0334 | [eli.someck@redwoodnyc.com](mailto:eli.someck@redwoodnyc.com)

[www.redwoodnyc.com](http://www.redwoodnyc.com)

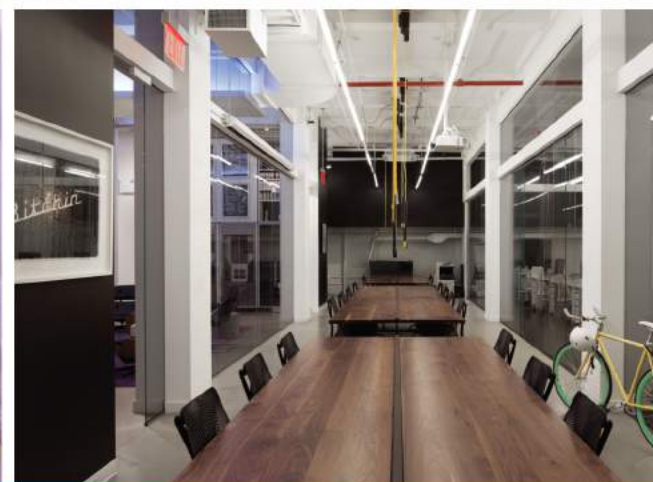


**CHELSEA  
CASTLE**

**150 W 22<sup>ND</sup> STREET**  
BETWEEN 6<sup>TH</sup> & 7<sup>TH</sup> AVENUE



**REDWOOD**  
PROPERTY GROUP



**CONTACT EXCLUSIVE BROKERS:**

Jay D. Fuller | M. Rapaport Co., Inc. | P: 917.939.7992 | [jd@mrpaport.com](mailto:jd@mrpaport.com)

[www.150w22.com](http://www.150w22.com)

Eli Someck | Redwood Property Group | P: 646.214.0334 | [eli.someck@redwoodnyc.com](mailto:eli.someck@redwoodnyc.com)

[www.redwoodnyc.com](http://www.redwoodnyc.com)

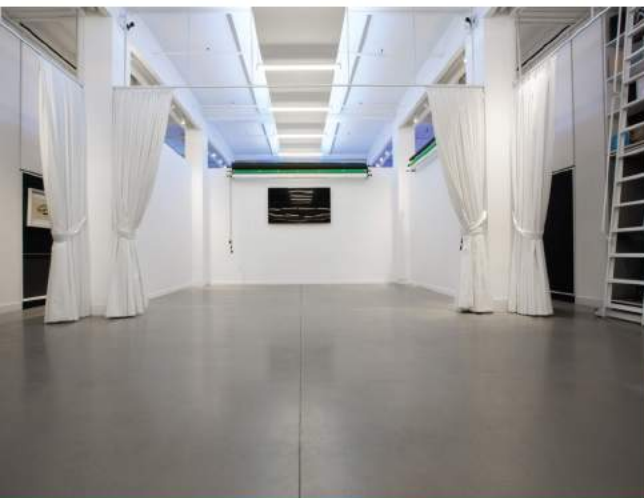
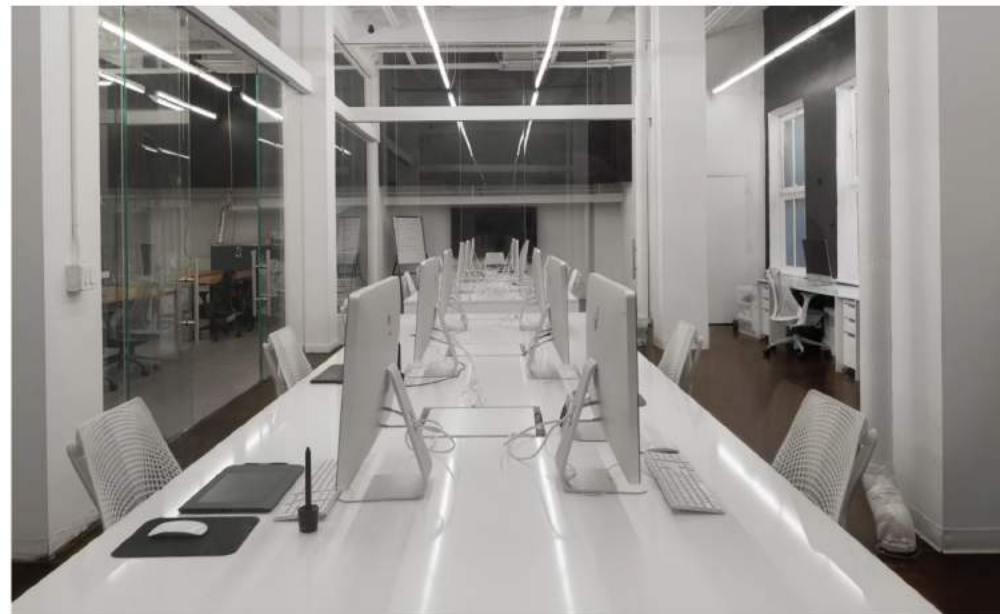


**CHELSEA  
CASTLE**

**150 W 22<sup>ND</sup> STREET**  
BETWEEN 6<sup>TH</sup> & 7<sup>TH</sup> AVENUE



**REDWOOD**  
PROPERTY GROUP



**CONTACT EXCLUSIVE BROKERS:**

Jay D. Fuller | M. Rapaport Co., Inc. | P: 917.939.7992 | [jd@rapaport.com](mailto:jd@rapaport.com)

[www.150w22.com](http://www.150w22.com)

Eli Someck | Redwood Property Group | P: 646.214.0334 | [eli.someck@redwoodnyc.com](mailto:eli.someck@redwoodnyc.com)

[www.redwoodnyc.com](http://www.redwoodnyc.com)



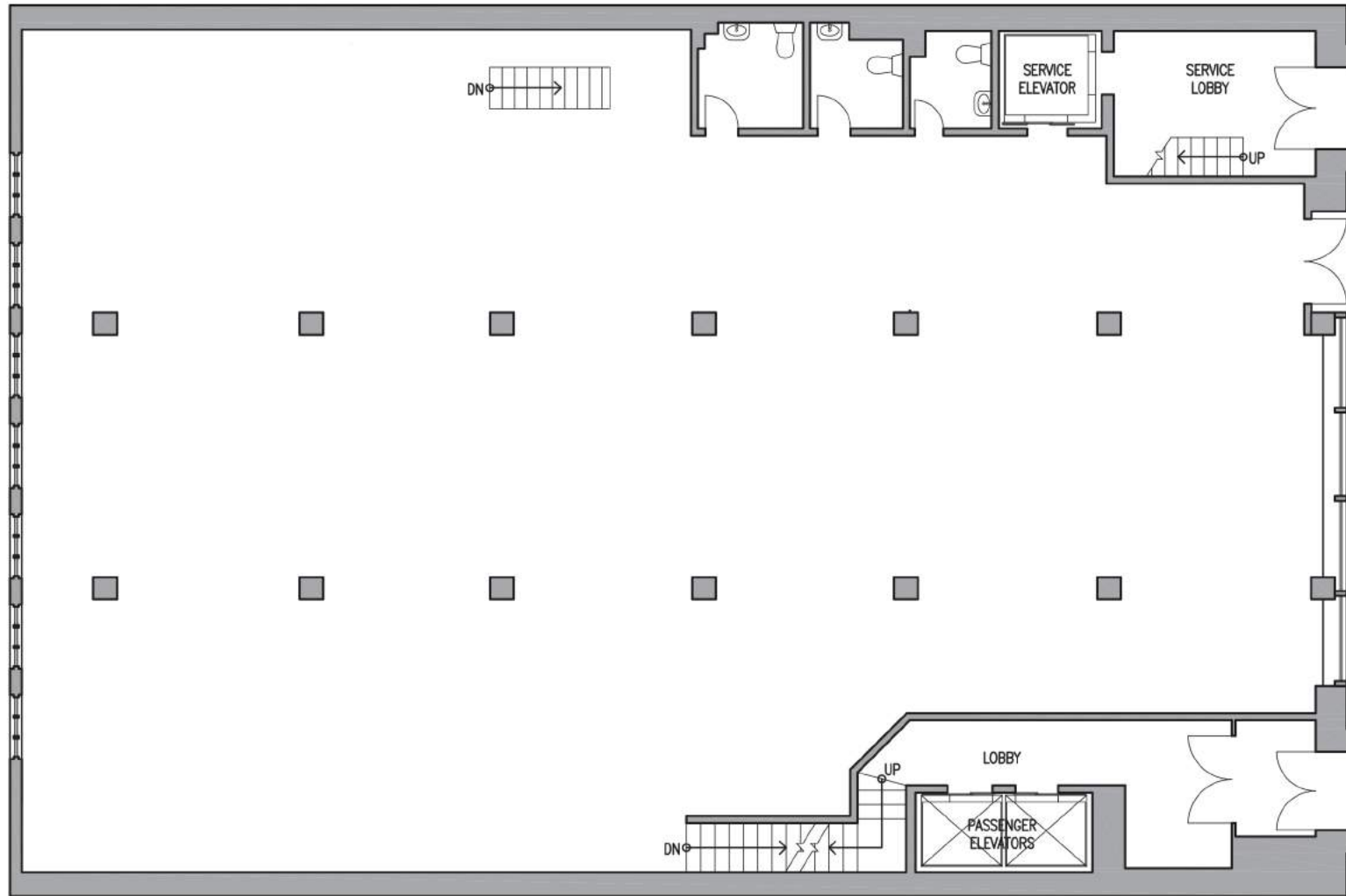
**CHELSEA  
CASTLE**

**150 W 22<sup>ND</sup> STREET**  
BETWEEN 6<sup>TH</sup> & 7<sup>TH</sup> AVENUE



**REDWOOD**  
PROPERTY GROUP

## Ground Floor



### CONTACT EXCLUSIVE BROKERS:

Jay D. Fuller | M. Rapoport Co., Inc. | P: 917.939.7992 | [jd@mrapoport.com](mailto:jd@mrapoport.com)

[www.150w22.com](http://www.150w22.com)

Eli Someck | Redwood Property Group | P: 646.214.0334 | [eli.someck@redwoodnyc.com](mailto:eli.someck@redwoodnyc.com)

[www.redwoodnyc.com](http://www.redwoodnyc.com)



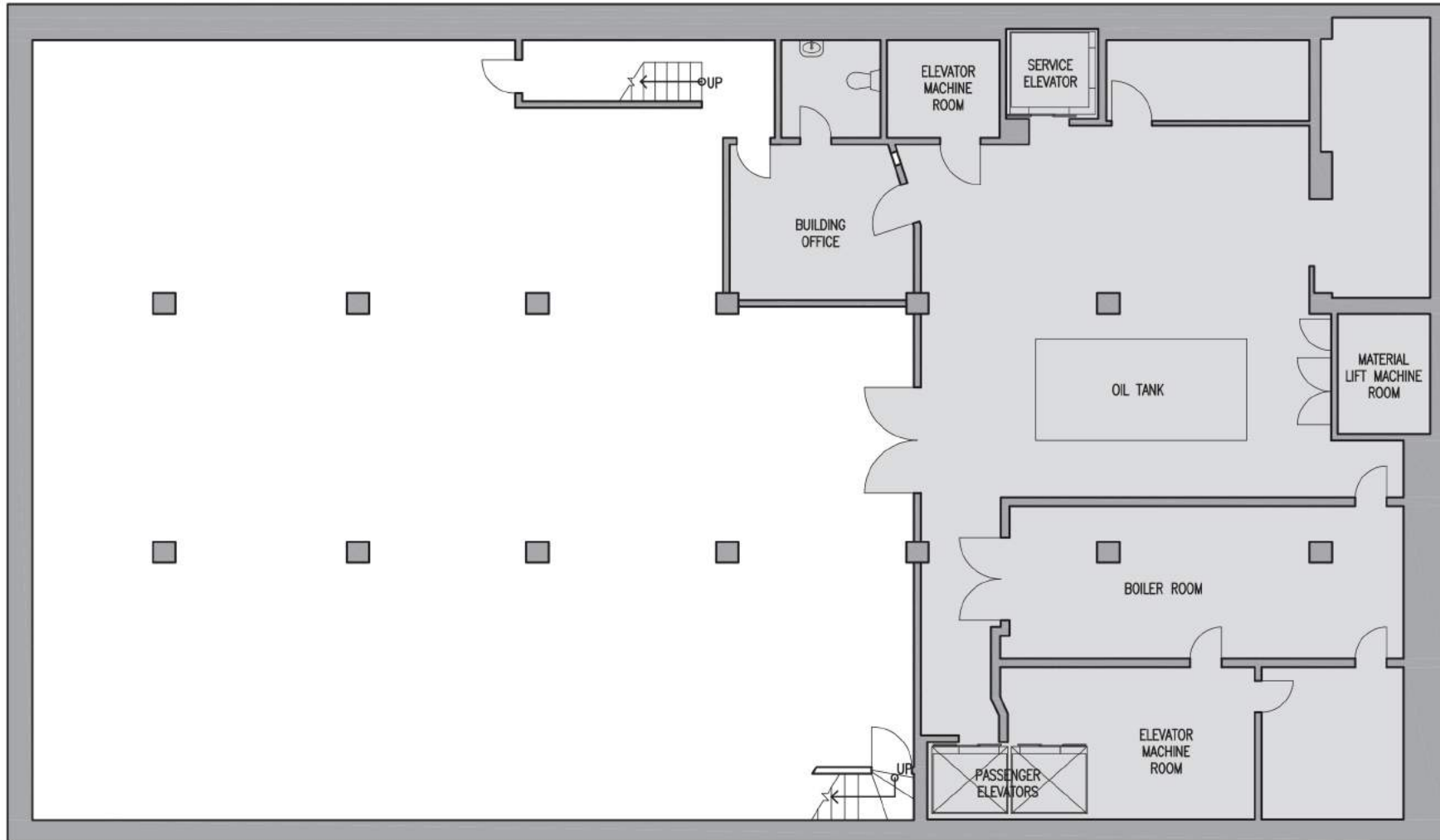
**CHELSEA  
CASTLE**

**150 W 22<sup>ND</sup> STREET**  
BETWEEN 6<sup>TH</sup> & 7<sup>TH</sup> AVENUE



**REDWOOD**  
PROPERTY GROUP

## Lower Level



### CONTACT EXCLUSIVE BROKERS:

Jay D. Fuller | M. Rapaport Co., Inc. | P: 917.939.7992 | [jd@rapaport.com](mailto:jd@rapaport.com)

[www.150w22.com](http://www.150w22.com)

Eli Someck | Redwood Property Group | P: 646.214.0334 | [eli.someck@redwoodnyc.com](mailto:eli.someck@redwoodnyc.com)

[www.redwoodnyc.com](http://www.redwoodnyc.com)

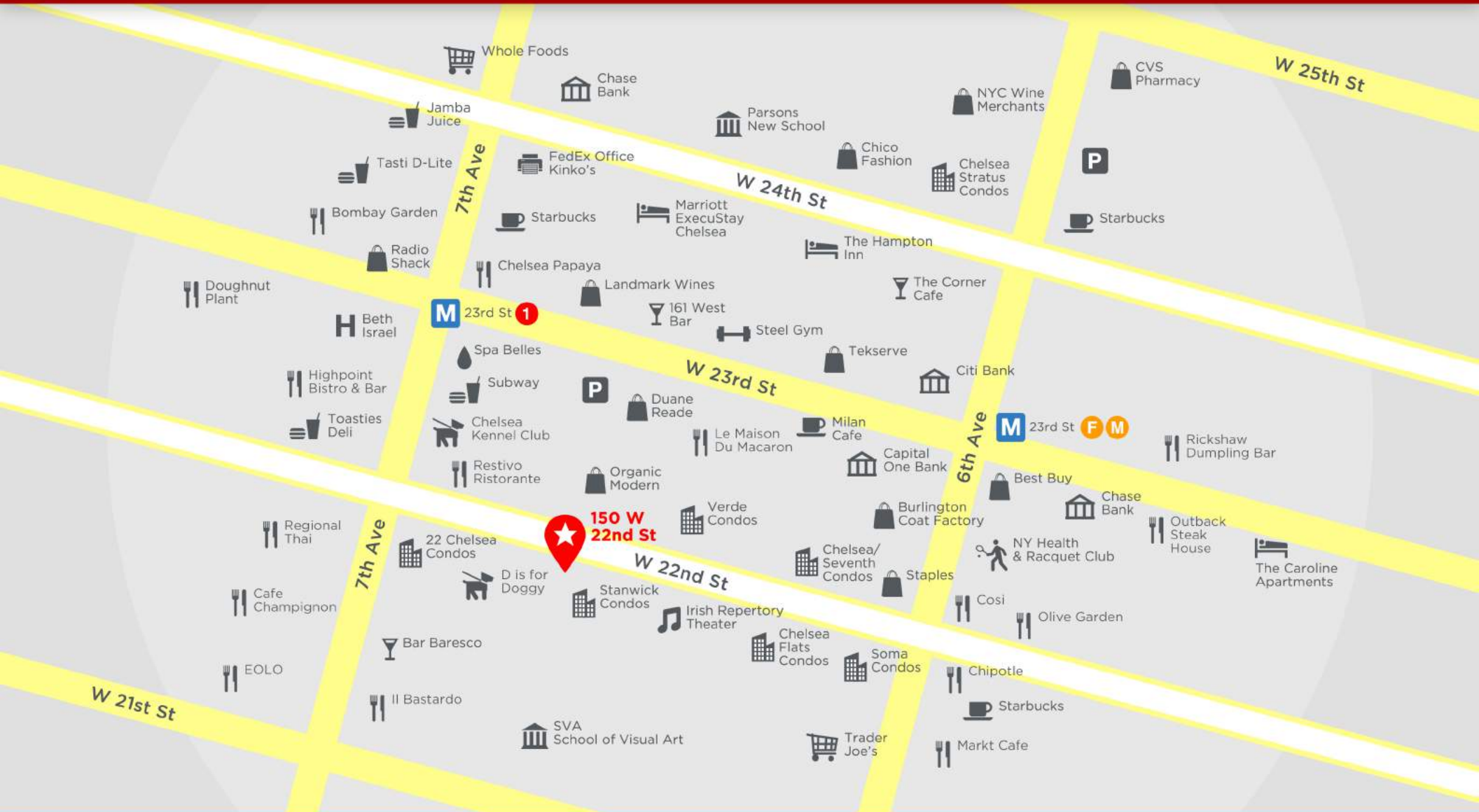


**CHELSEA  
CASTLE**

# 150 W 22<sup>ND</sup> STREET BETWEEN 6<sup>TH</sup> & 7<sup>TH</sup> AVENUE



**REDWOOD  
PROPERTY GROUP**



## CONTACT EXCLUSIVE BROKERS:

Jay D. Fuller | M. Rapaport Co., Inc. | P: 917.939.7992 | jd@mrpaport.com

[www.150w22.com](http://www.150w22.com)

Eli Someck | Redwood Property Group | P: 646.214.0334 | eli.someck@redwoodnyc.com

[www.redwoodnyc.com](http://www.redwoodnyc.com)